



Papua New Guinea

*Minerals for Life!*



---

# MINE CLOSURE & REHABILITATION – PAPUA NEW GUINEA

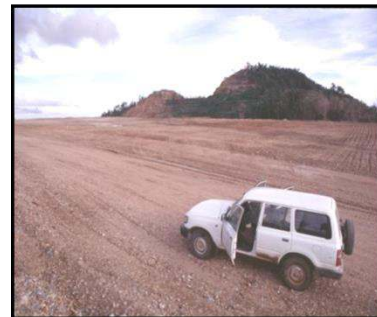
ROGER GUNSON  
EXECUTIVE MANAGER – REGULATORY  
OPERATIONS  
MINERAL RESOURCES AUTHORITY

---

Geneva  
October 2017

# REGULATORY SETTINGS

- ❑ NO CURRENT PROVISIONS FOR MINE CLOSURE IN MINING ACT 1992
- ❑ EXCEPTION – SPECIFIC MINE LEGISLATION FOR THE OK TEDI MINE HAS FROM 2001 A DECOMMISSIONING CODE FOR CLOSURE & FAF
- ❑ LIMITED PROVISIONS EXIST IN THE ENVIRONMENT ACT 2000 & REFERENCED IN THE ENVIRONMENT PERMIT I.E. MUST ACTIVATE CLOSURE PLAN WITHIN 5 YEARS OF ANTICIPATED CLOSURE
- ❑ PNG HISTORY: ONE MINE CLOSED – MISIMA (2004-2010); ONE ABANDONED – SINIVIT (2014); ONE DUE TO CLOSE – SIMBERI (2018) = MINIMAL CLOSURE EXPERIENCE

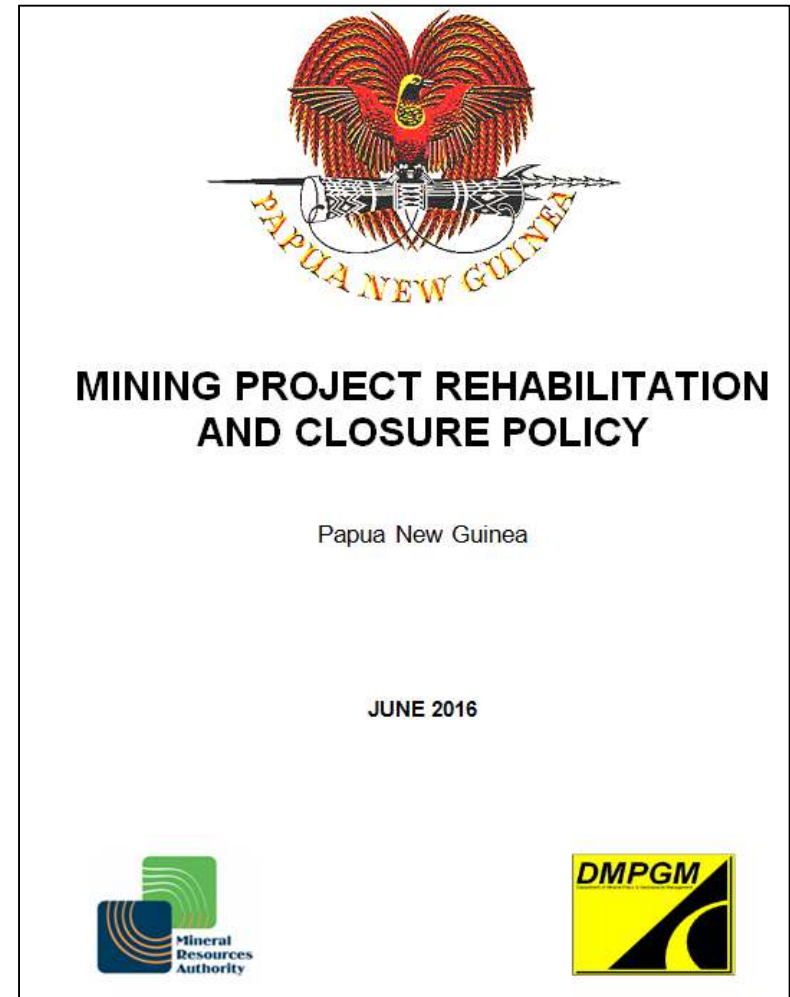


(6 - 12 Months)



# REGULATORY SETTINGS

- ❑ NEW 'MINING REHABILITATION AND CLOSURE POLICY' & PART VIII – REHABILITATION AND MINE CLOSURE PROVISIONS IN MINING ACT 2016
- ❑ PROPOSED TO GOVERNMENT IN 2016 BUT NOT ENACTED AND UNDER REVIEW – REGULATIONS NOT YET DEVELOPED
- ❑ MINING ACT 2016 ANTICIPATES 'REHABILITATION AND MINE CLOSURE PLAN' AS PRESCRIBED & FINANCIAL ASSURANCE FROM GRANT OF MINING LEASE



# APEC MINE CLOSURE CHECKLIST FOR GOVERNMENTS – PNG APPLICATION

- ❑ PROVIDES GUIDANCE FOR THE PRESCRIPTION OF MINE CLOSURE PLANS
- ❑ PROVIDES GUIDANCE FOR REGULATORY RESPONSIBILITY & ADMINISTRATION OF PLAN & FINANCIAL ASSURANCE
- ❑ DEVELOPED AT AN OPPORTUNE TIME FOR PNG IN TERMS OF PNG'S POLICY & LEGISLATIVE DEVELOPMENT TIMETABLE
- ❑ PROVIDES USEFUL COMPARATIVES WITH LESSONS LEARNED FROM OK TEDI CODE CLOSURE PLAN AND FAF REVIEWS, MISIMA CLOSURE EXPERIENCE, EXISTING PROBLEMS OF SINIVIT ABANDONMENT & UPCOMING PROCESS FOR TRUNCATED TIMEFRAME FOR SIMBERI CLOSURE



APEC Mining Task Force  
May 2017

*Ref: Canada Economy Concept Note Project – Mine Closure Checklist for Government, Presentation APEC SOM 2, Hanoi, May 2017*

# MISIMA: EXAMPLE OF A POSITIVE CLOSURE OUTCOME

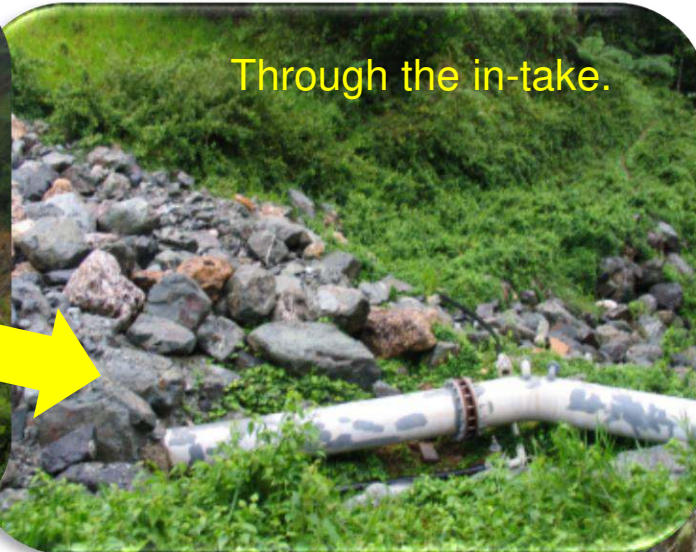
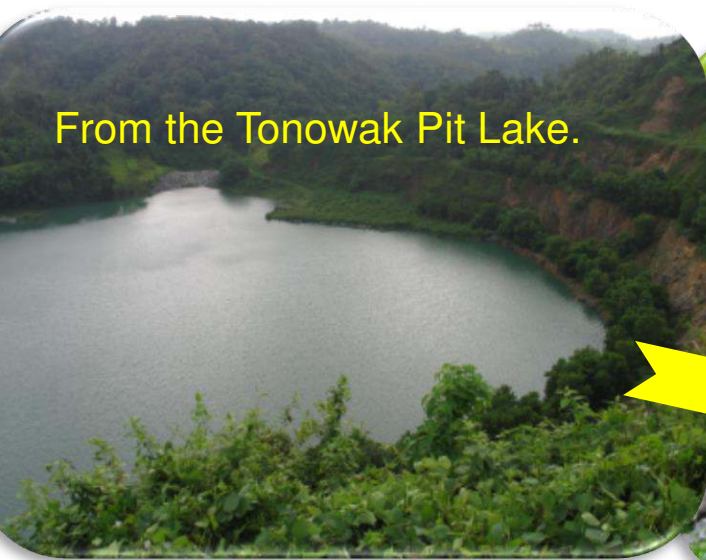
From the Tonowak Pit Lake.

Through the in-take.

Down 1.8 km of pipeline.

Out through the tail race.  
Back into Imgamaniana  
Creek.

Into the turbine  
(200 L/s, 200kW)



# MISIMA SITE REHABILITATION



# EM TASOL – TENKYU TRU

