

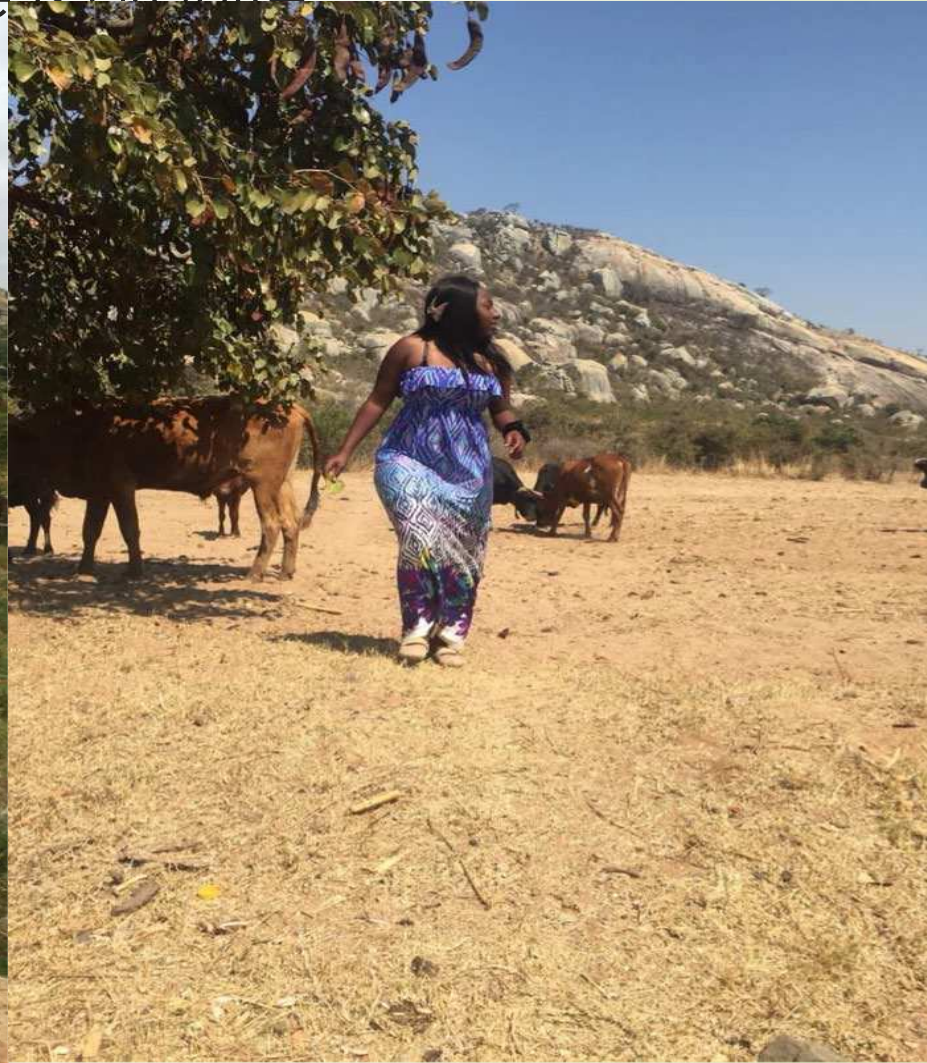


Enganging communities in the mine life cycle

Joyce Nyamukunda

My passion about engagement and why I am here.

'I grew up in a village in Mutoko district in Zimbabwe where there is granite'



Types of community engagement

Community building

Linking communities with power holders

Participation in national and international events

Parliament interface

Litigation

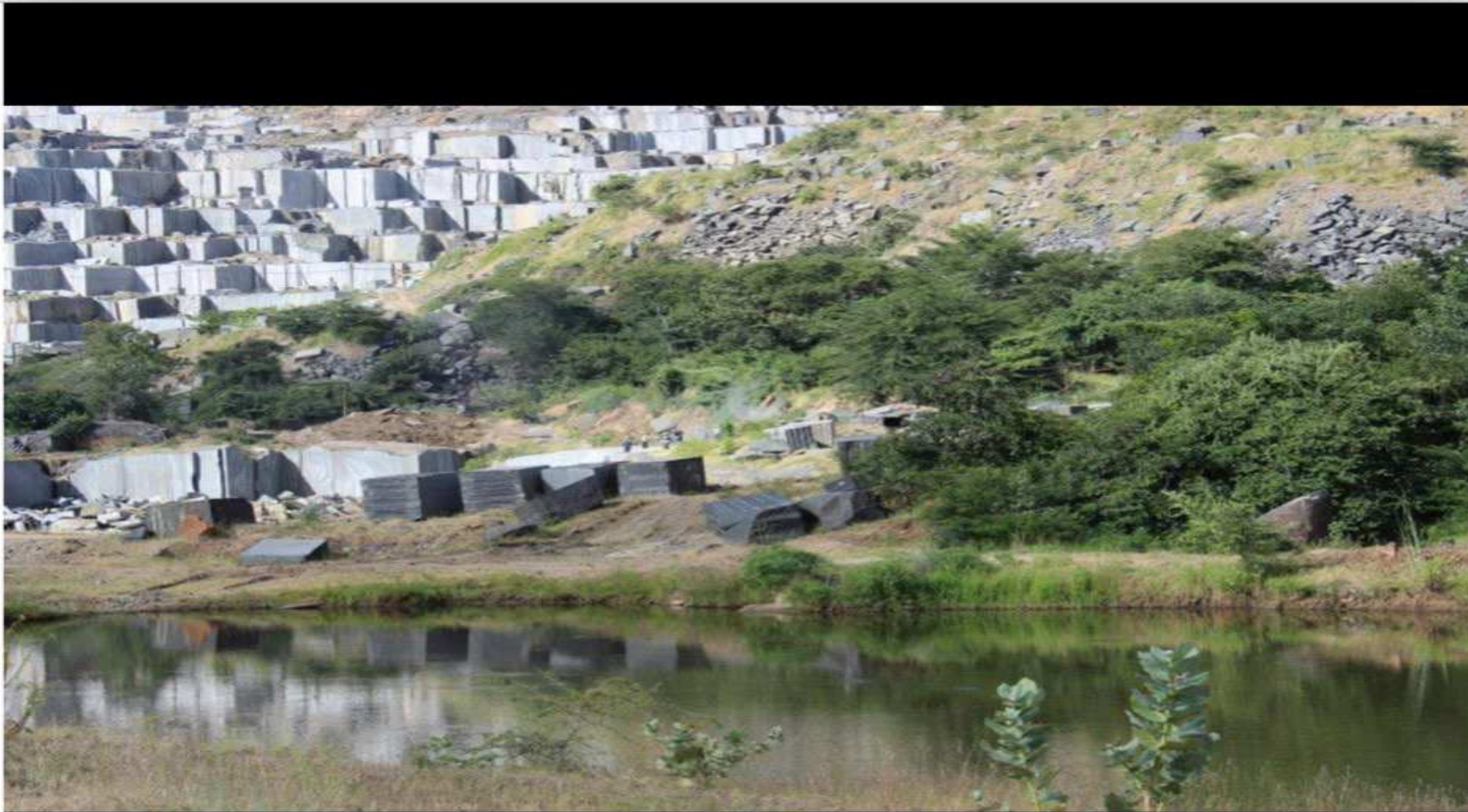
What is driving community engagement?

- Counting the costs and questioning the benefits
- Blasting



What is driving community engagement?

- Loss of human lives and livestock



What is driving community engagement?

- Counting the costs and questioning the benefits



What is driving community engagement?

- Loss of livelihoods



What is driving community engagement?

- Water pollution



What is driving community engagement?

- Effects of water pollution



What is driving community engagement?

- New investments - transparency, contract monitoring ???



What is driving community engagement?

- Sustainable, Responsible mining and development???



Positive benefits

- Communities demanding transparency and accountability in the management of mineral resources

COMMUNITIES IN THE DRIVING SEAT

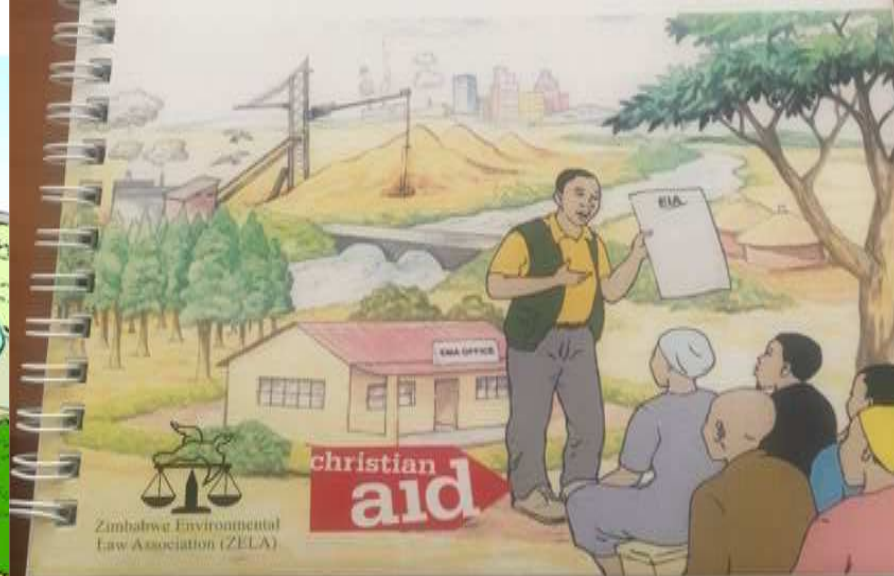
An Illustrative Guide on Community Participation in Community
Share Ownership Trusts (CSOTs)

Developed by the
Zimbabwe Environmental Law Association (ZELA)



ILLUSTRATIVE GUIDE

ON PROMOTING COMMUNITY PARTICIPATION IN THE EIA PROCESS



Positive benefits

- Community data driven advocacy



empowerment
transparency
service delivery
Citizen engagement
less corruption
effective Governance



Zimbabwe Environmental
Law Association (ZELA)

#openDataZIM

#openDataDay

Access to information is a constitutional right

Positive benefits

- Multistakeholder engagements



Positive benefits

- Multistakeholder engagements



Positive benefits

- Multistakeholder engagements

**Parliamentary Portfolio Committee
on Mines and Energy will be
conducting Public Hearings on the
Mines and Minerals Amendment Bill.**

 #mmab



Lwendulu Hall:Hwange

Monday 19 September 2016
1000-1200 hrs



Gwanda Hotel:Gwanda

Tuesday 20 September 2016
1000-1200 hrs



Ironside Hall: Shurugwi

Wednesday 21 September 2016
0930-1200 hrs



Kwekwe Theatre:Kwekwe

Wednesday 21 September 2016
1400-1600 hrs



Tursey Hall :Mhondoro Ngezi

Thursday 22 September 2016
0900-1200 hrs



Nyamakwere HALL:Mutoko

Friday 23 September 2016
0900-1220 hrs



HICC: Harare

Saturday 24 September 2016
0900-1200 hrs



The public, stake-holders, interested groups and organisations are invited to the hearings

“ZELA linking Parliament with people”

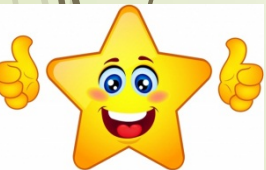
What can governments do to facilitate effective community engagement within the mining sector?



Institutional and Law reforms that promote sustainable and responsible mining investments



Implementation, enforcement, monitoring compliance by mining companies



Transparency and Accountability across the mining value chain

Community participation across the mining value chain

What new types or approaches to engagement are you most excited about moving forward, and why?

➤ Dialogue



**“FROM THE GRASSROOTS UP”:
A Multi-Stakeholder Engagement model
for unlocking shared value in mineral
resource governance.**



Thank You